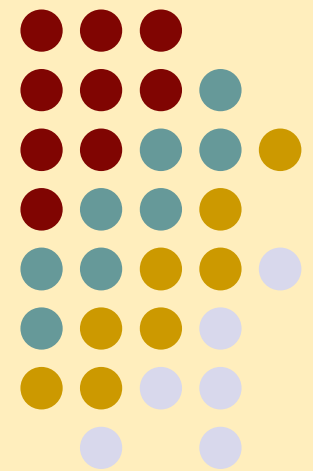
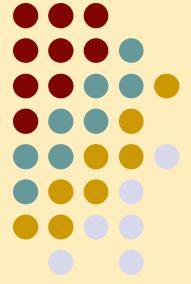




# State Nutrition Strategy Monitoring Unit

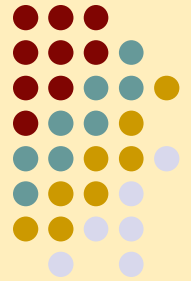


**Department of  
Women and Child Development & Social Welfare**



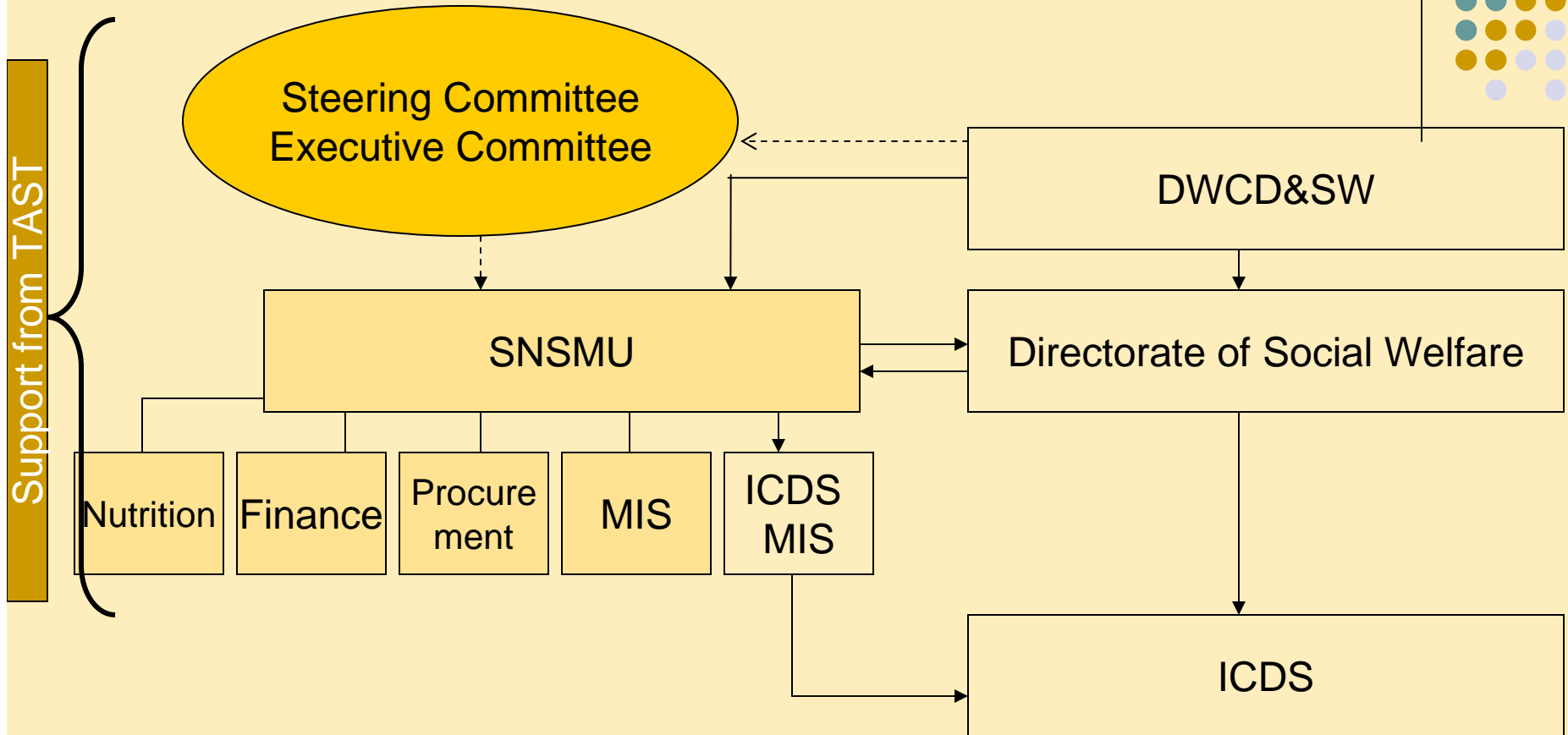
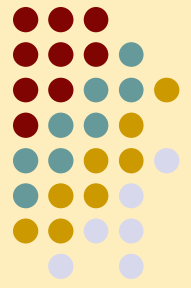
- Set up during 2008-09 to implement the “**The West Bengal State Nutrition Strategy**”
- The initial phase of the strategy is supported by DFID through the HSDI

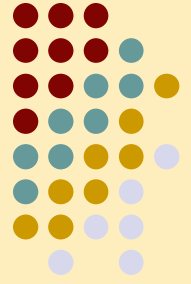
# Purpose



- Strengthen ICDS services, in areas of
  - Management
    - MIS
    - Financial management
    - Procurement
    - Monitoring and Evaluation
  - Programme strengthening – focusing on Nutrition
    - Capacity building
    - Behaviour Change Communication

# Programme Structure





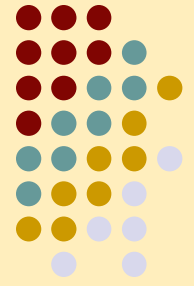
# Key processes

- Review and inform
  - Find out what can be done better
  - Highlight what needs to be done differently
- Plan and support the process for
  - Change
  - Reform
- Coordinate and facilitate
  - Activities
  - Information/ knowledge



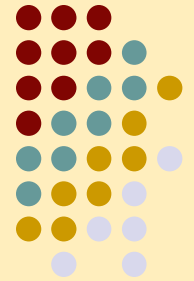
# Management Support

- ICDS MIS cell established in SNSMU to Generate evidence based decisions/ policy
  - Periodic analysis of MPRs and other reports for **quarterly reviews**
  - Continuous analysis of available information to spot weaknesses and lacunae
- Monitoring – Field visits
  - Compile and collate first hand information from SNSMU and state monitoring team and use for reviews
- Quality control
  - Procurement processes
  - Construction of AWCs
- Studies / assessments
  - Facilitate and coordinate studies
  - Plan and coordinate the use of findings and recommendations to strengthen management and program



# Programme support

- Capacity Building
  - Support institutionalization of processes for continuous in-service training to all levels of functionaries
  - Implement state training plan – ensure training content adapted to changing needs
- Strengthening Behaviour Change Communication
  - Development of materials, newer approaches – quality control, technical inputs
  - Ensure flow of reference and learning materials to AWCs and other levels as appropriate, Design, reproduce, distribute
- Plan for sustained nutrition inputs for the under 2s
- Facilitate and coordinate donor / TA inputs



**THANK YOU**